

Pre-Engineering: Culvert Photo Deliverable Sample

This section outlines the guidelines for photographing culverts during a pre-engineering survey. The naming convention for photos must include the culvert asset number, feature, and viewing direction as shown in the example below. All photos should be stored in a "PHOTOS" subfolder within the final culvert survey deliverable folder.

Example: Photo Directory Structure and Naming Convention

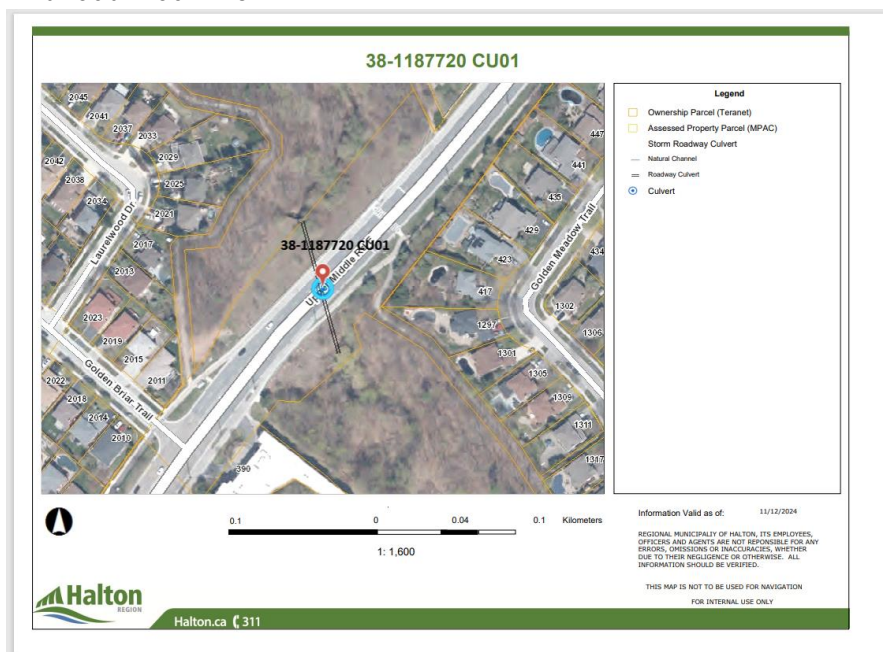
- PHOTOS
 - 38-1187720 CU01-CONCHW-N
 - 38-1187720 CU01-CONCOUTLET-1INSIDE
 - 38-1187720 CU01-CONCOUTLET-2INSIDE
 - 38-1187720 CU01-CONCSTR-N1
 - 38-1187720 CU01-CONCSTR-N2
 - 38-1187720 CU01-CONCSTR-N3
 - 38-1187720 CU01-INSIDECULV
 - 38-1187720 CU01-CULV-N1
 - 38-1187720 CU01-CULV-N2
 - 38-1187720 CU01-CULV-N3
 - 38-1187720 CU01-CULV-N4
 - 38-1187720 CU01-CULV-N5
 - 38-1187720 CU01-CULV-N6
 - 38-1187720 CU01-CULV-S1
 - 38-1187720 CU01-CULV-S2
 - 38-1187720 CU01-CULV-S3
 - 38-1187720 CU01-CULV-S4
 - 38-1187720 CU01-CULV-S5
 - 38-1187720 CU01-CULV-S6
 - 38-1187720 CU01-CULV-S7

Culvert Asset Number

The culvert asset number is obtained from Halton's GIS. If you do not have access to Halton's GIS, please contact the Project Manager to request the asset number.

- In this example, the culvert asset number is:

38-1182230 CU01



Photographs: The following photographs may not necessarily follow the order of the directory structure above. They are provided as reference examples to illustrate the required photography standards.



